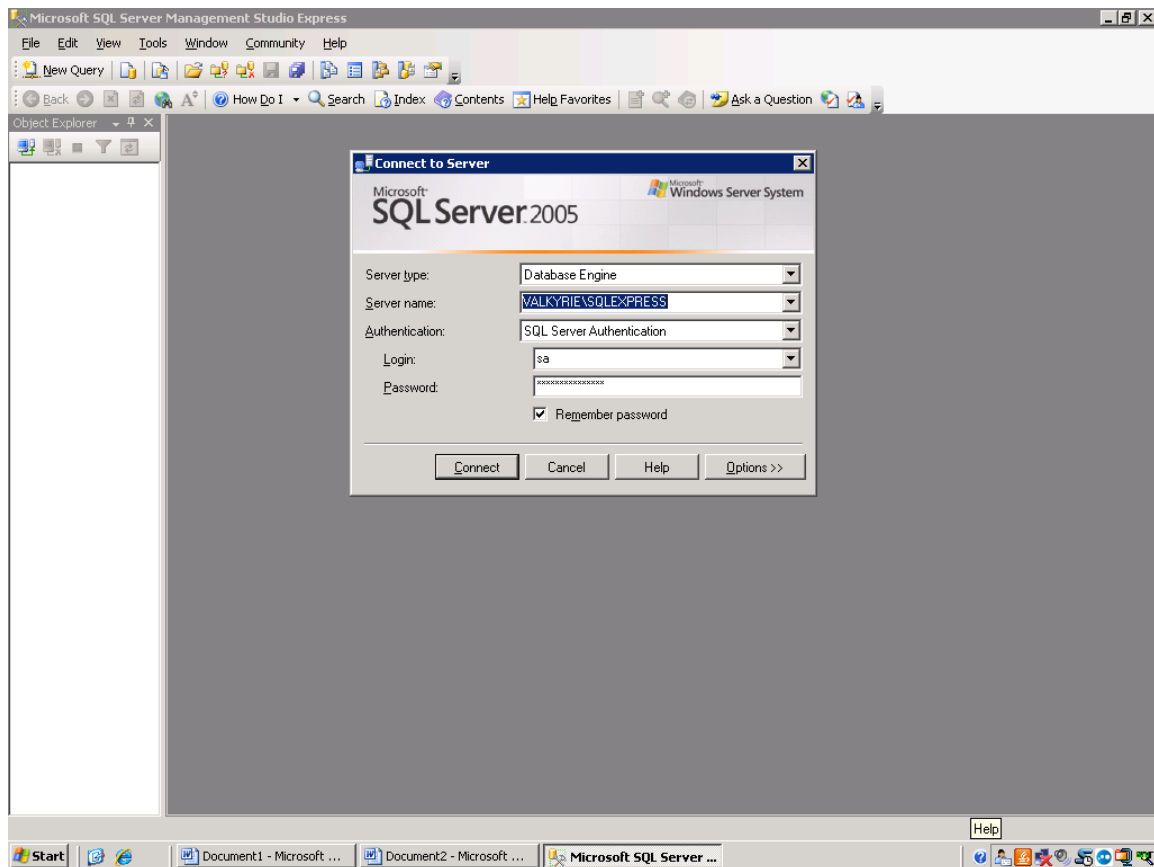


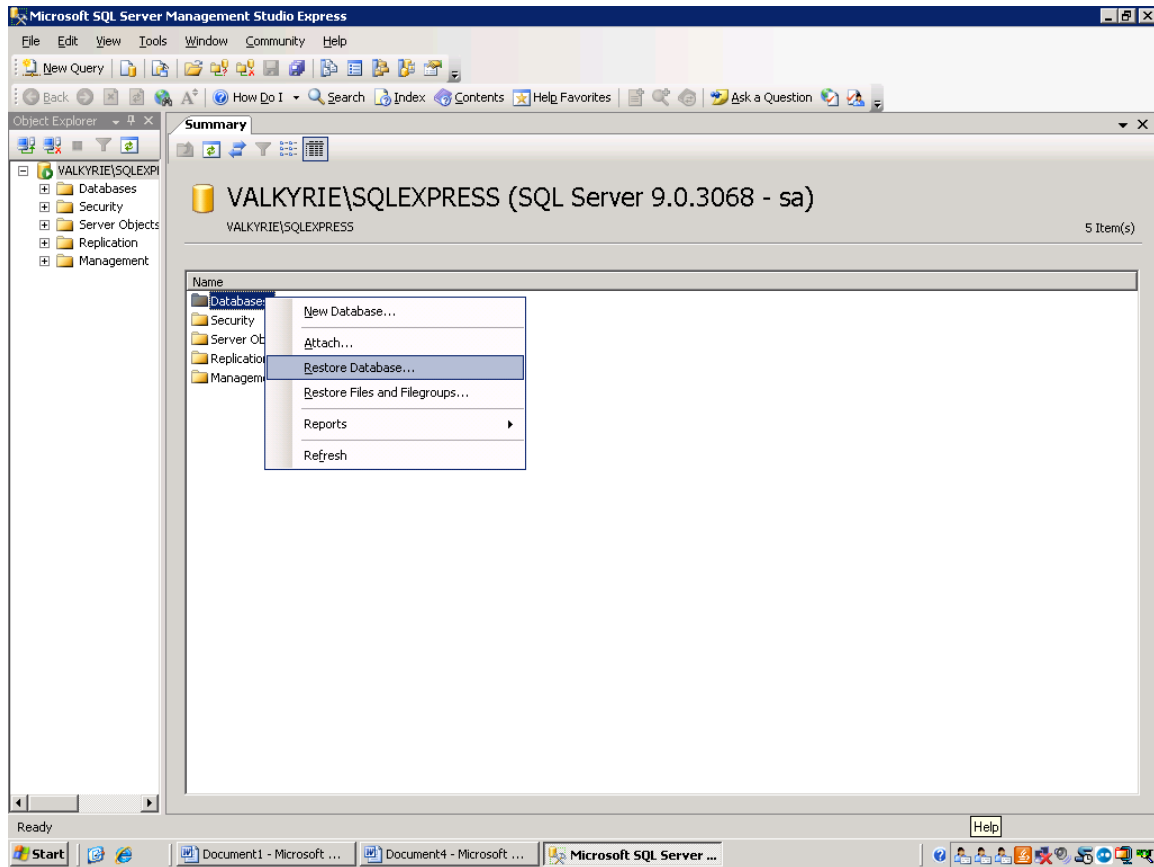
# Restoring a SQL Database

It might be necessary to restore your SQL database if anything happens to the original. Restoring is also how you would install your SQL database on a different computer. Before restoring it to another computer, be sure that you have installed SQL Server 2005 or SQL Server Express 2005 on the target computer.

To restore, open SQL Server Management Studio Express and click on Connect



Right-click on the Databases selection and choose Restore database.

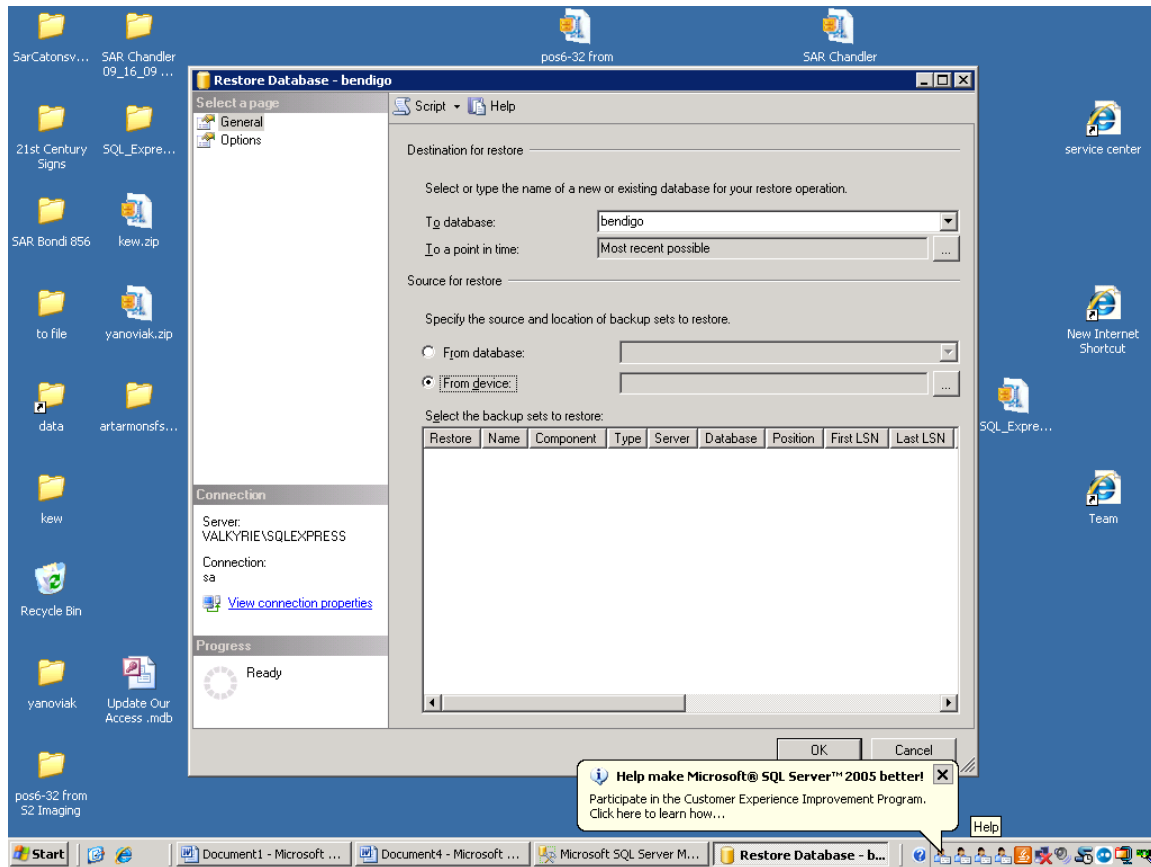


Verify that the General page is selected.

Choose the desired database to restore from the dropdown list in the field named "To database". If it's not in the list, type in the name that you wish to restore it as in the Database Name field.

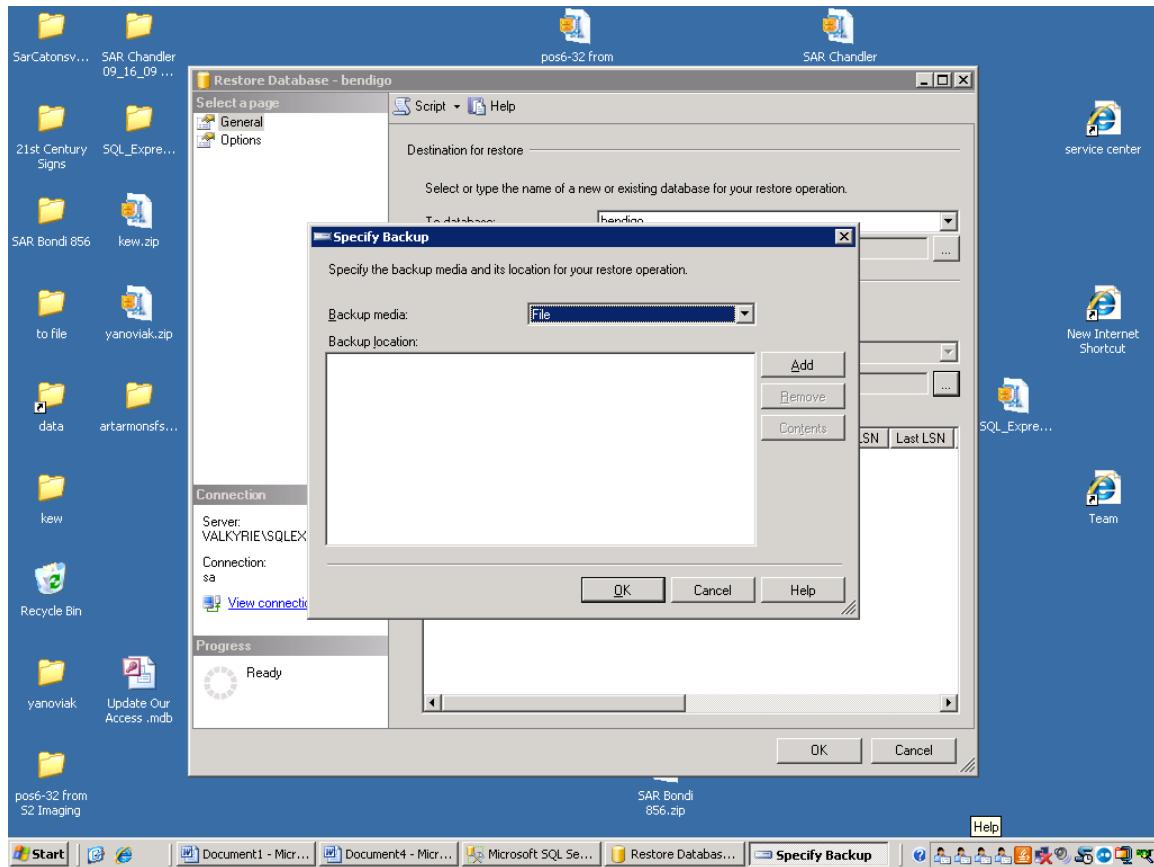
Click the radio button for the Restore from Device Option.

Click on the gray ellipse button.



Click on the Add button.

The following pop-up screen will appear where you can specify the file you want to restore.



Click on the Add button and a browser window will pop up.

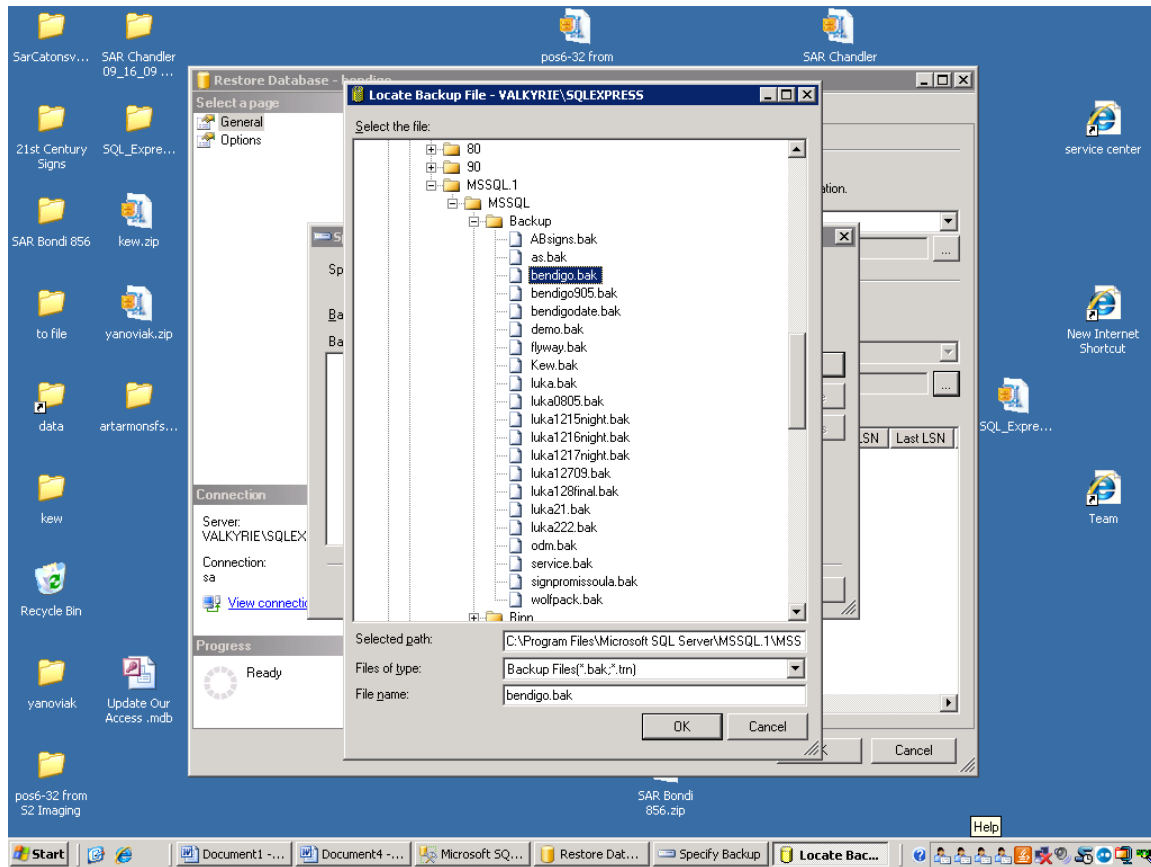
Find the database that you wish to restore to your system. This can be located anywhere on your computer but the default directory is:

C:\Program Files\Microsoft SQL Server\MSSQL.1\MSSQL\Backup

Or

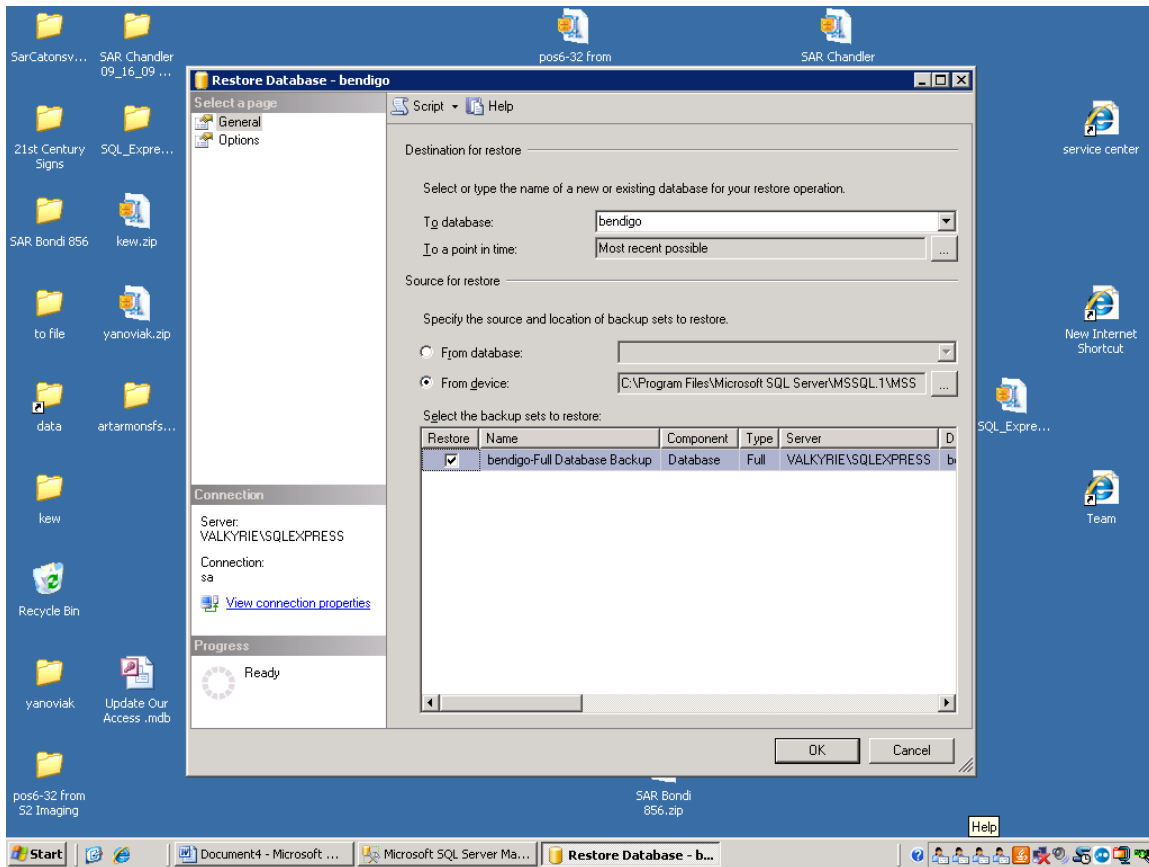
C:\Program Files (x86)\Microsoft SQL Server\MSSQL.1\MSSQL\Backup

Highlight the desired database backup file and click ok. In this example we are using the Bendigo database.



Click on Ok on the Specify Backup File Box.

The database and path will appear in the section of the screen titled “Select the backup sets to restore”. Click the check box next to the database that appears there.



Click on the Options page.

Click on Overwrite the existing database.

Verify the file path that you want the files restored to. The default file path for SQL is:

C:\Program Files\Microsoft SQL Server\MSSQL.1\MSSQL\Data

Or

C:\Program Files (x86)\Microsoft SQL Server\MSSQL.1\MSSQL\Data

**Important Note:** At times SQL has a problem with dropping the “Data” part of the file path. If you don’t catch it, then you may end up with multiple copies of your database on the server.

Click on the OK button.



You can watch the progress of the restore by watching the Progress box in the lower left corner of the window.

When it's finished, you will receive a message that the database was restored successfully.

Exit the Restore database screen and the SQL Server Management Studio Express program.