

Point to a SQL Database

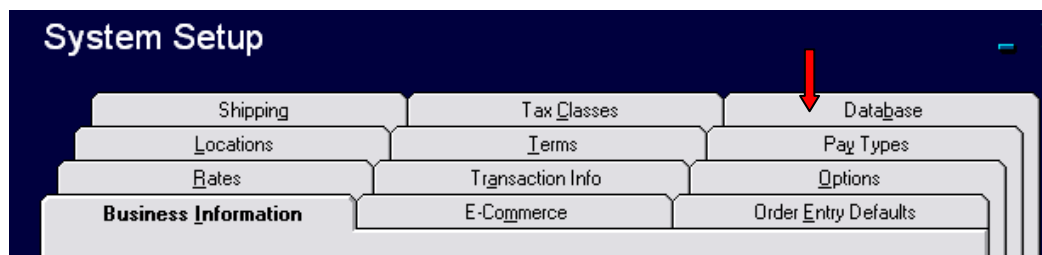
This document assumes that your SQL Server is set up and that you have the **ADVANTAGE** database loaded on it. If **ADVANTAGE** has not yet been installed on the workstation, install it and choose the “**Install Software and Data**” option.

To point to the SQL database, follow these instructions:

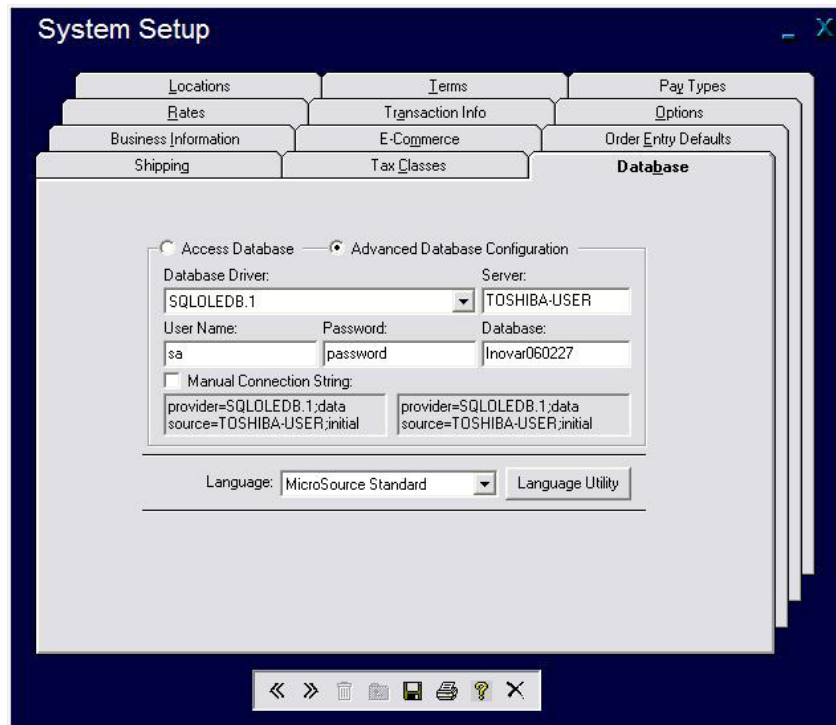
- ✚ Launch **ADVANTAGE**.
- ✚ Click on **System** then **System Setup**:



- ✚ Once at the default **System Setup** screen (the **business information** tab), click on the **Database** tab:



✚ You will see the following:



- ✚ Click the radio button next to **Advanced Database Configuration**.
- ✚ Complete the following fields. If you are unsure of what should be typed here, you will need to contact your system administrator:
 - ✚ **Server** - This is the name that identifies the SQL server on your network.
 - ✚ **User Name** - The user name needed to log into SQL on the server.
 - ✚ **Password** - The password needed to open SQL on the server.

The rest of the fields will be filled in by **ADVANTAGE**. Be sure to save your changes. Close **ADVANTAGE** and restart to see your database.