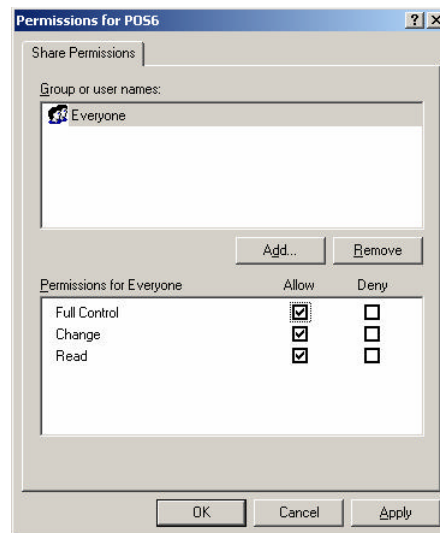
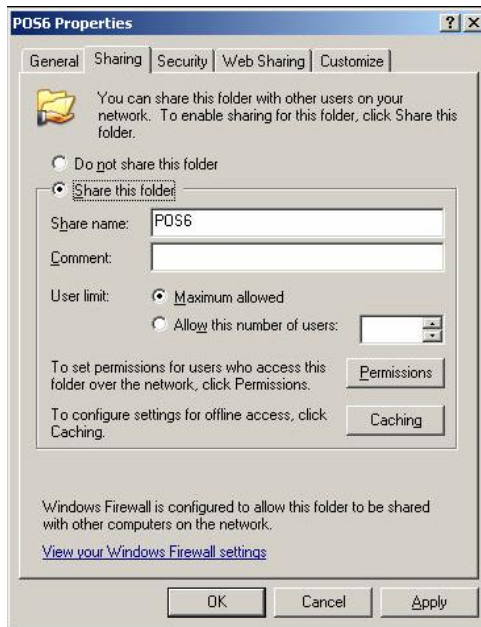


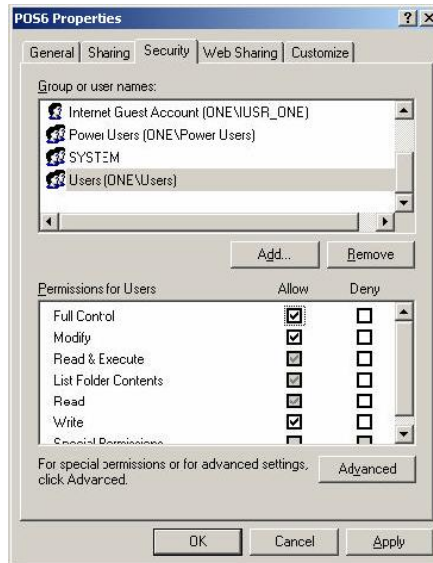
# Networking for Advanced Users

These instructions are for PEER TO PEER NETWORKING OF **ADVANTAGE** FOR ADVANCED COMPUTER USERS AND TECHNICIANS. These instructions also assume that you are using Windows XP Pro.

- ✦ The access database and rpt files are stored in the C:\Program Files\POS6\data folder of the main or 'server' machine of the peer to peer workgroup or domain.
- ✦ On the 'server' machine share the C:\Program Files\POS6 folder for the **EVERYONE** user group.



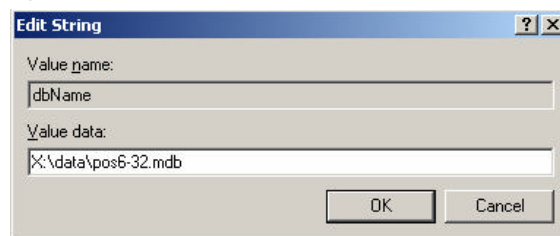
- ✚ The POS6 folder security settings should be set to full control for all users.



- ✚ On the 'workstation' computer(s) map the `\\server\pos6` folder with any drive letter.
- ✚ Open the registry to the following key: **HKEY\_CURRENT\_USER\Software\VB and VBA Program Settings\POS6\Startup**
- ✚ Locate the **dbName** key:

CurrentVersion	REG_SZ	8.1.3
dbMode	REG_SZ	False
dbName	REG_SZ	c:\program files(pos6)\data\pos6-32.mdb
EstMgrPaperSize	REG_SZ	0
EstTemplate	REG_SZ	
EstTemplate1	REG_SZ	

- ✚ Change the **dbName** key to reflect the path to the server using the mapped driver letter in step 4.



- ✚ **ADVANTAGE** should now start on all workstations.