

# Using Fractional Sales Tax Calculation

In some states, for instance California, sales tax may only be charged on a selected portion of products. There is a feature in **ADVANTAGE** that allows you to do this.

This documentation, like most other specialized documentation, assumes that you are already familiar with **ADVANTAGE** and know how to use it appropriately. If you need help, please consult the appropriate document.

## Set Up Products

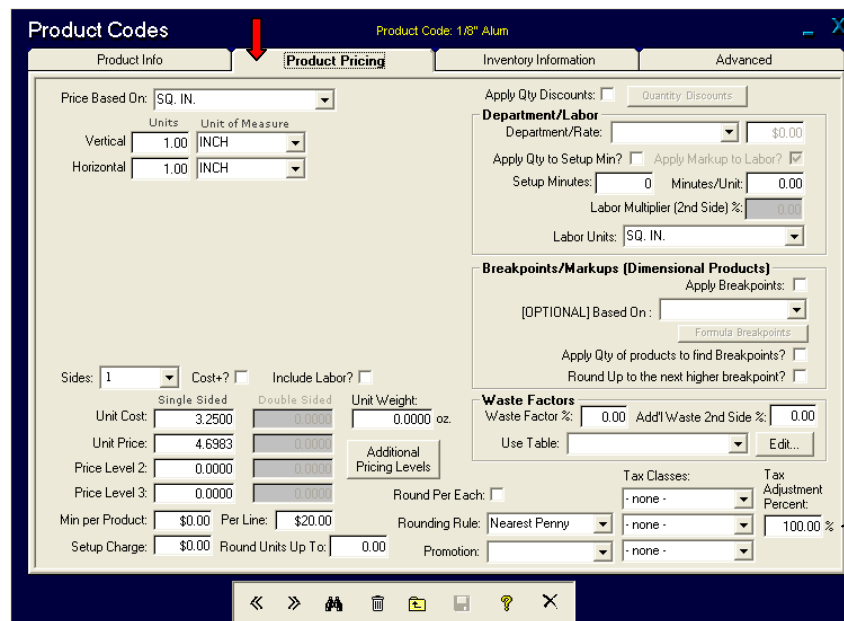
- From the **ADVANTAGE** main menu, select **Production** then **Products and Inventory**:



Click on **Add/Edit Products**:



Select the product that you want to work with then click on the **Product Pricing** tab:



This number needs to be a percent. Do not enter, for example 1/3 or .33. Enter it as 33%.

Enter your tax adjustment as a percent in the **Tax Adjustment Percent** box.

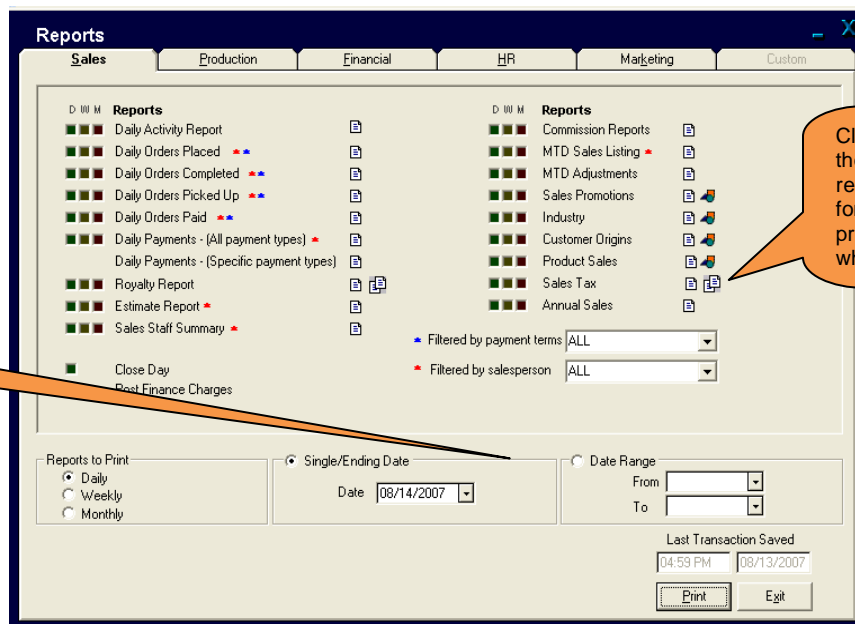
When using this product on an order, the calculation will look at the tax class in **ADVANTAGE** for the customer, multiply it by whatever percentage from this box, and charge that amount of tax.

## Running the Tax Reports

- From the **ADVANTAGE** main menu, click on **Reports** then **Sales Reports**:



- ADVANTAGE** will display the **Sales Reports** screen:



When exporting to QuickBooks, the adjusted tax amount will be exported to the account you have identified in your QuickBooks setup screen, usually a sales tax liability account.