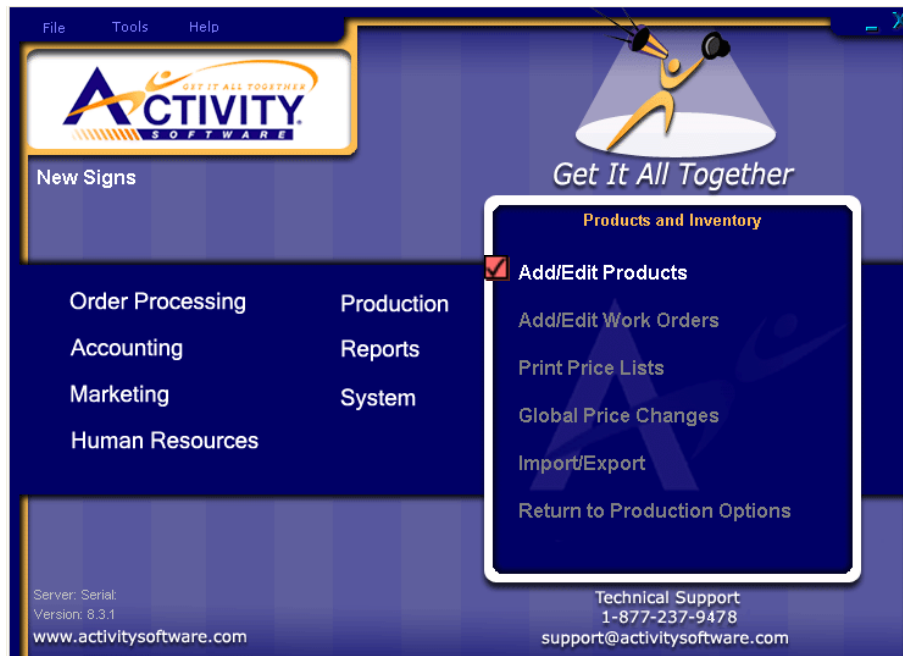


Cost + Labor Markups

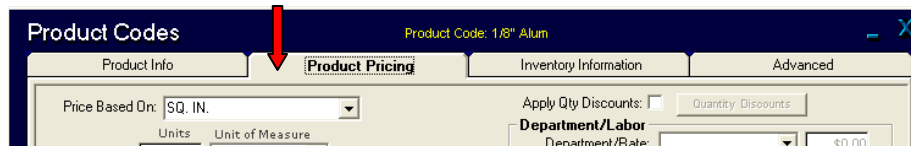
You can view **Cost+** and **Markups** from the **ADVANTAGE** main menu by clicking on **Production** then **Products and Inventory**:



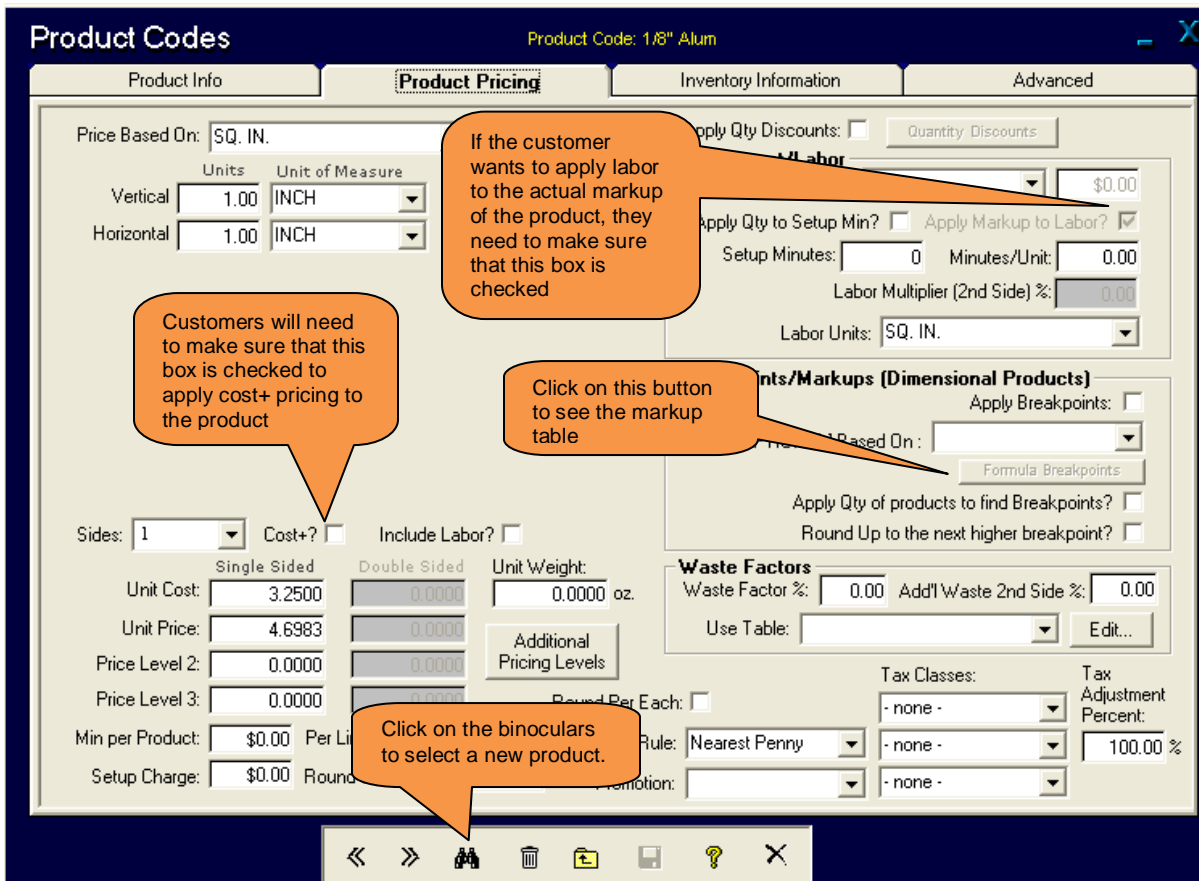
Click on **Add/Edit Products**:



Click on the **Product Pricing** tab:



ADVANTAGE will display the **Product Pricing** screen:



Product Codes Product Code: 1/8" Alum

Product Info | **Product Pricing** | Inventory Information | Advanced

Price Based On: SQ. IN. Apply Qty Discounts: Quantity Discounts

Units Unit of Measure Department/Labor Department/Rate

Vertical 1.00 INCH Labor \$0.00
Horizontal 1.00 INCH Apply Qty to Setup Min? Apply Markup to Labor?
Setup Minutes: 0 Minutes/Unit: 0.00
Labor Multiplier (2nd Side) %: -0.00
Labor Units: SQ. IN.

Breakpoints/Markups (Dimensional Products)
Apply Breakpoints:
Based On: Formula Breakpoints
Apply Qty of products to find Breakpoints?
Round Up to the next higher breakpoint?

Waste Factors
Waste Factor %: 0.00 Add'l Waste 2nd Side %: 0.00
Use Table: Edit...

Sides: 1 Cost+? Include Labor?
Single Sided Double Sided Unit Weight: 0.0000 oz.
Unit Cost: 3.2500 0.0000
Unit Price: 4.6983 0.0000
Price Level 2: 0.0000 0.0000 Additional Pricing Levels
Price Level 3: 0.0000 0.0000 Round Per Each:
Min per Product: \$0.00 Per Lin Rule: Nearest Penny Tax Classes: - none - Tax Adjustment Percent: 100.00 %
Setup Charge: \$0.00 Round Promotion: - none -

Callout 1: Customers will need to make sure that this box is checked to apply cost+ pricing to the product (points to Cost+? checkbox)

Callout 2: If the customer wants to apply labor to the actual markup of the product, they need to make sure that this box is checked (points to Apply Markup to Labor? checkbox)

Callout 3: Click on this button to see the markup table (points to Formula Breakpoints button)

Callout 4: Click on the binoculars to select a new product. (points to binoculars icon in the bottom toolbar)

